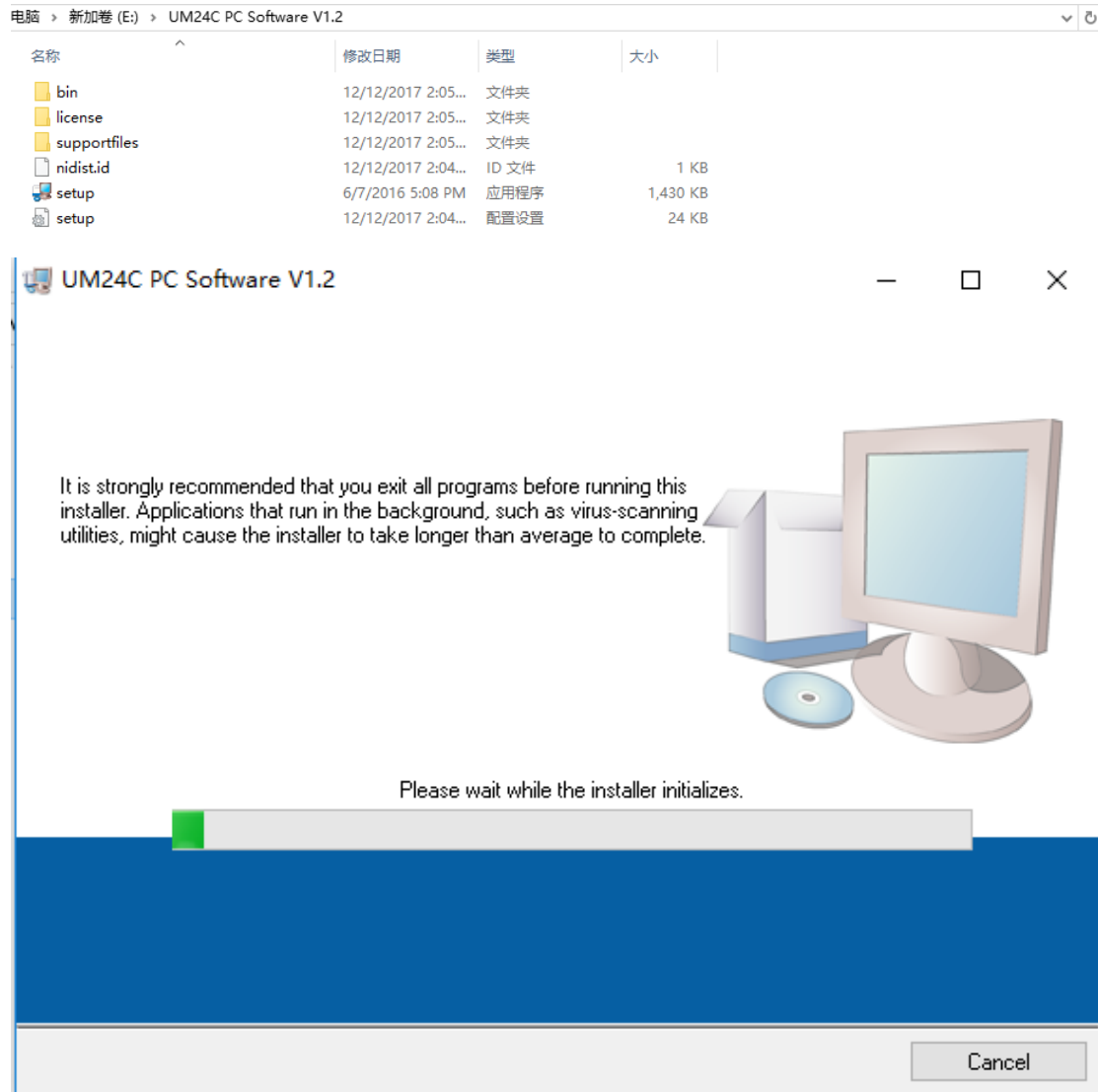


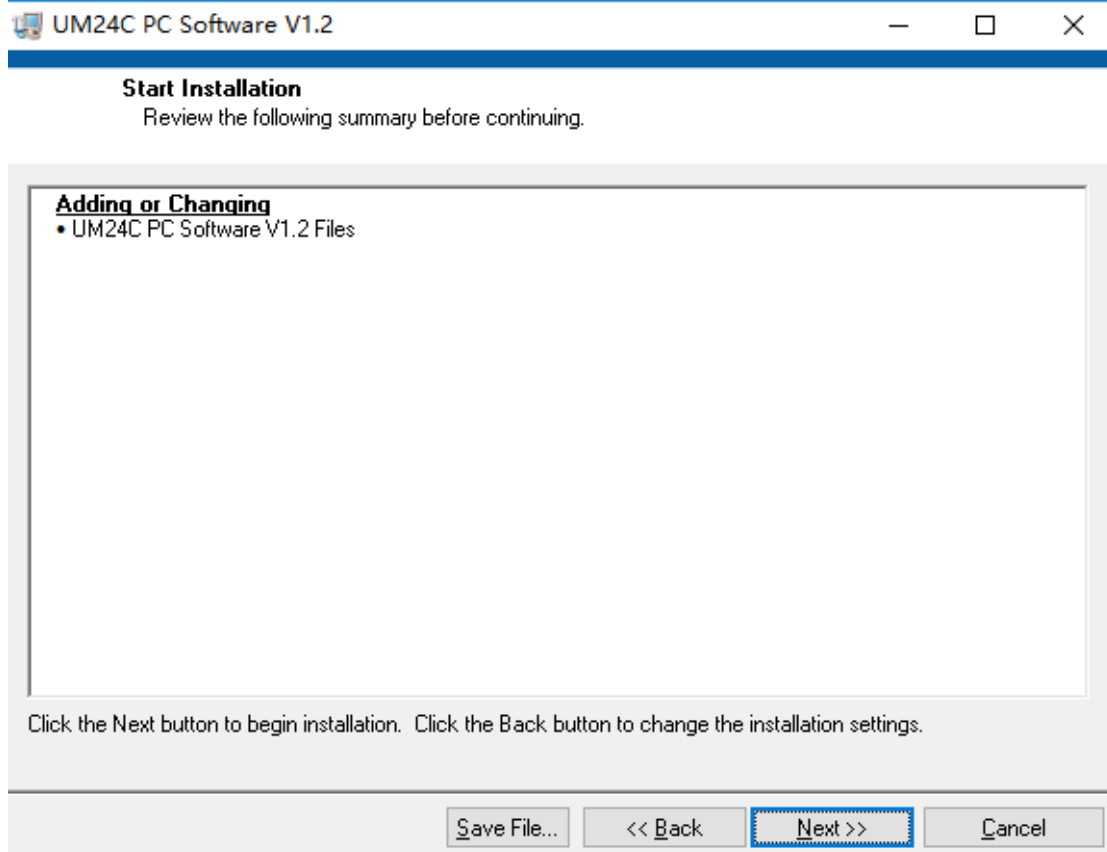
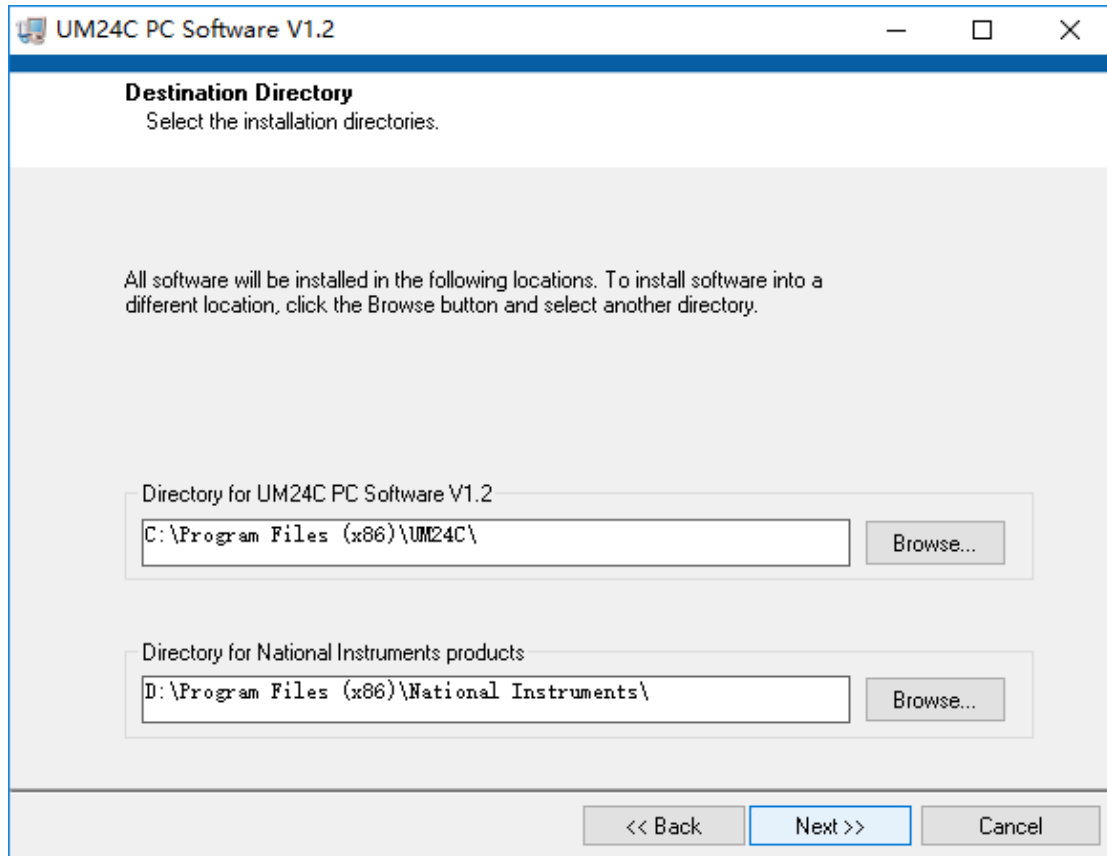
The PC Control Software Installation Instruction

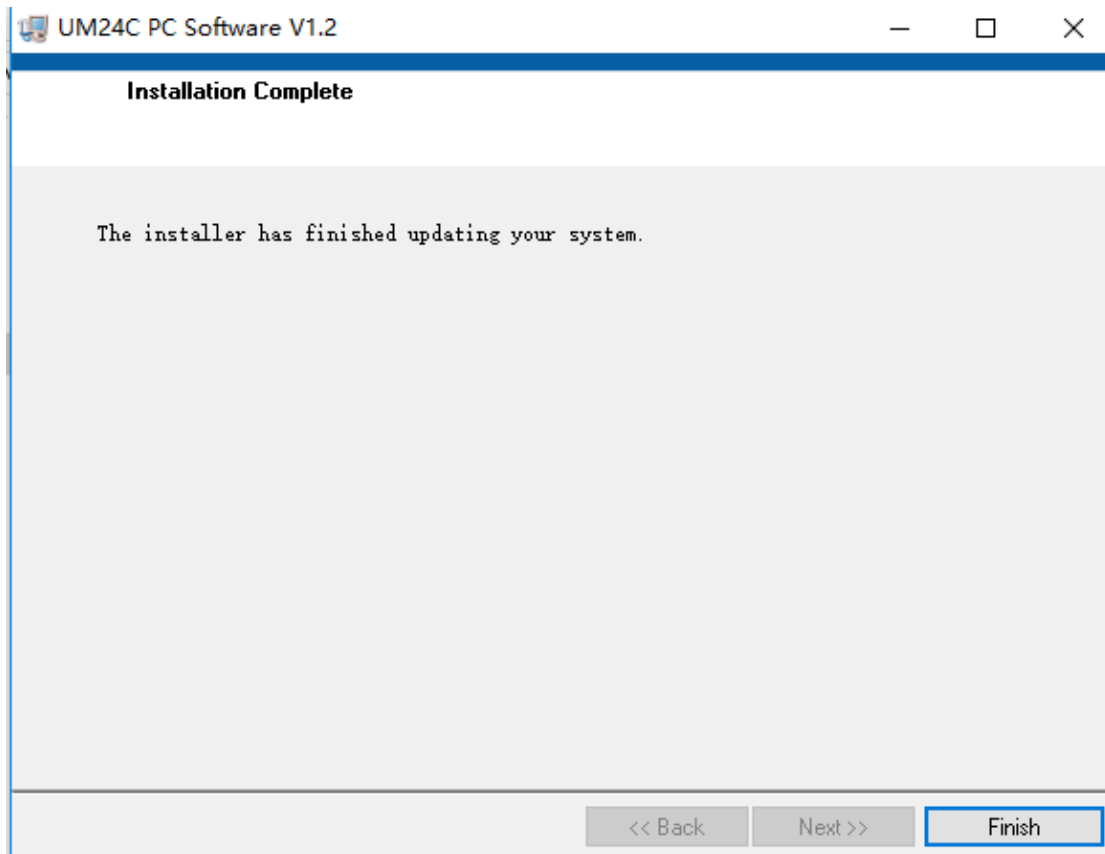
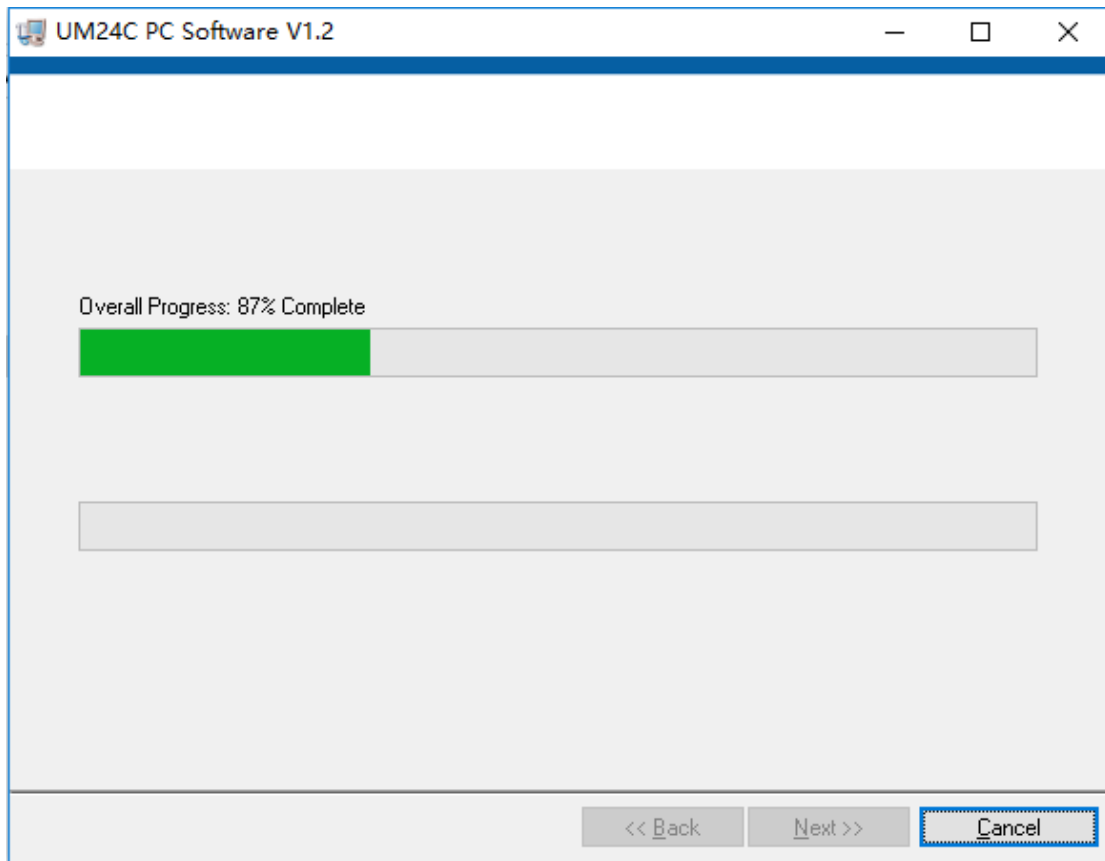
Note: This product only supports Windows 7 and above.

1 Unzip the installation package

2 Click setup to install







3 Bluetooth connection

Home

Find a setting

Devices

Add Bluetooth or other device

Printers & scanners

Mouse

Typing

Pen & Windows Ink

AutoPlay

Only chargers and USB connections to PCs are supported on your device

Add Bluetooth or other device

+ Mouse, keyboard, & pen

Available

On

Bluetooth

Audio

USB Keyboard

USB OPTICAL MOUSE

Wireless displays & docks

扬声器 (Realtek High Definition Audio)

麦克风 (Realtek High Definition Audio)

Related settings

2369

802.11n USB Wireless LAN Card

CSR8510 A10

Download over metered connections

[Additional resolution settings](#)

[Display settings](#)

[Mouse & touchpad settings](#)

[Devices and printers](#)

[More Bluetooth options](#)

[Audio device](#)

Make Windows better.

[Mixed reality](#)

Give us feedback

[Get help](#)

Home

Find a setting

Devices

Add Bluetooth or other device

Printers & scanners

Mouse

Typing

Pen & Windows Ink

AutoPlay




Only chargers and USB connections to PCs are supported on your device

Add Bluetooth or other device

+ Mouse, keyboard, & pen

Add a device

Choose the kind of device you want to add.

-  Bluetooth
Mice, keyboards, pens, or other kinds of Bluetooth devices
-  Wireless display or dock
Wireless monitors, TVs, or PCs that use Miracast, or wireless docks
-  Everything else
DLNA, DIAL, POS, and more

[Cancel](#)

Download over metered connections

[Additional resolution settings](#)

[Display settings](#)

[Mouse & touchpad settings](#)

[Devices and printers](#)

[More Bluetooth options](#)

[Audio device](#)

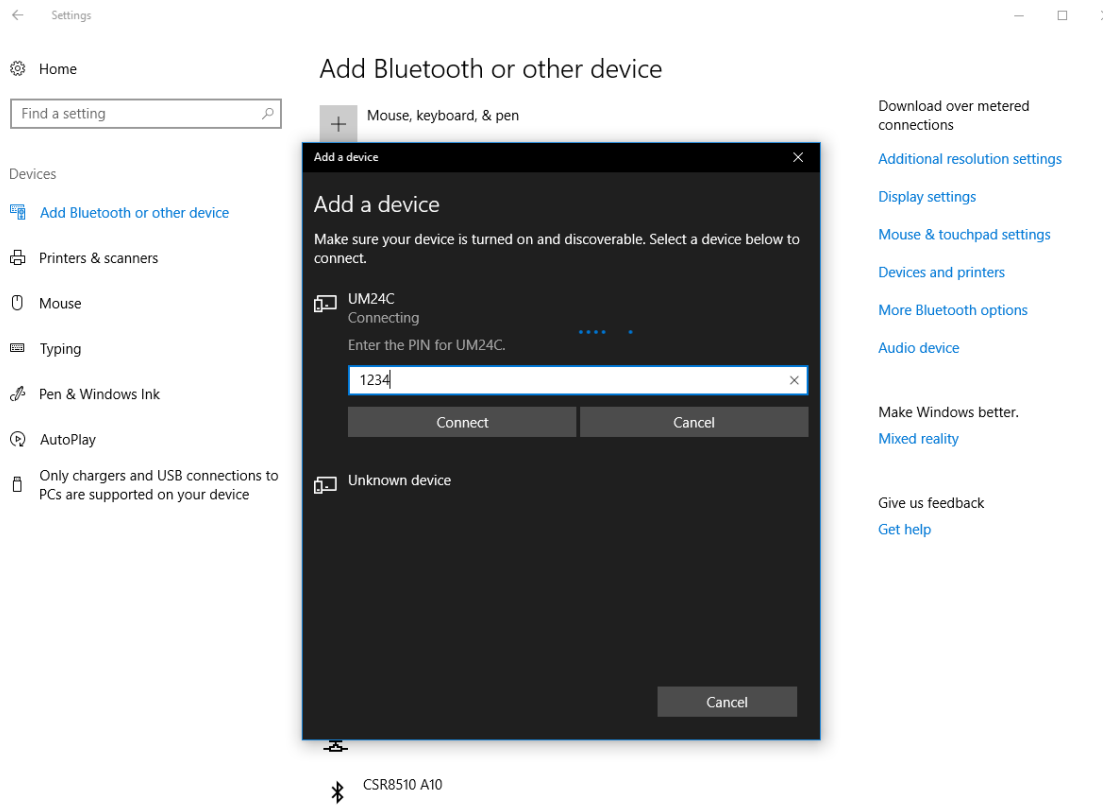
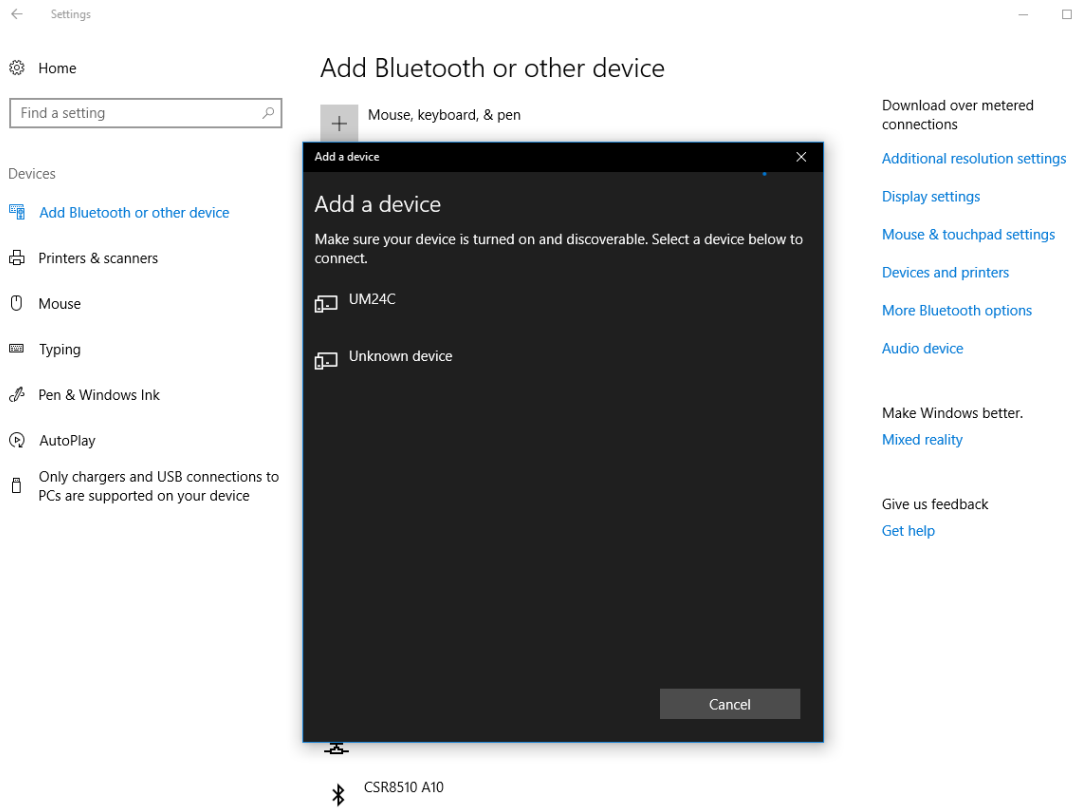
Make Windows better.

[Mixed reality](#)

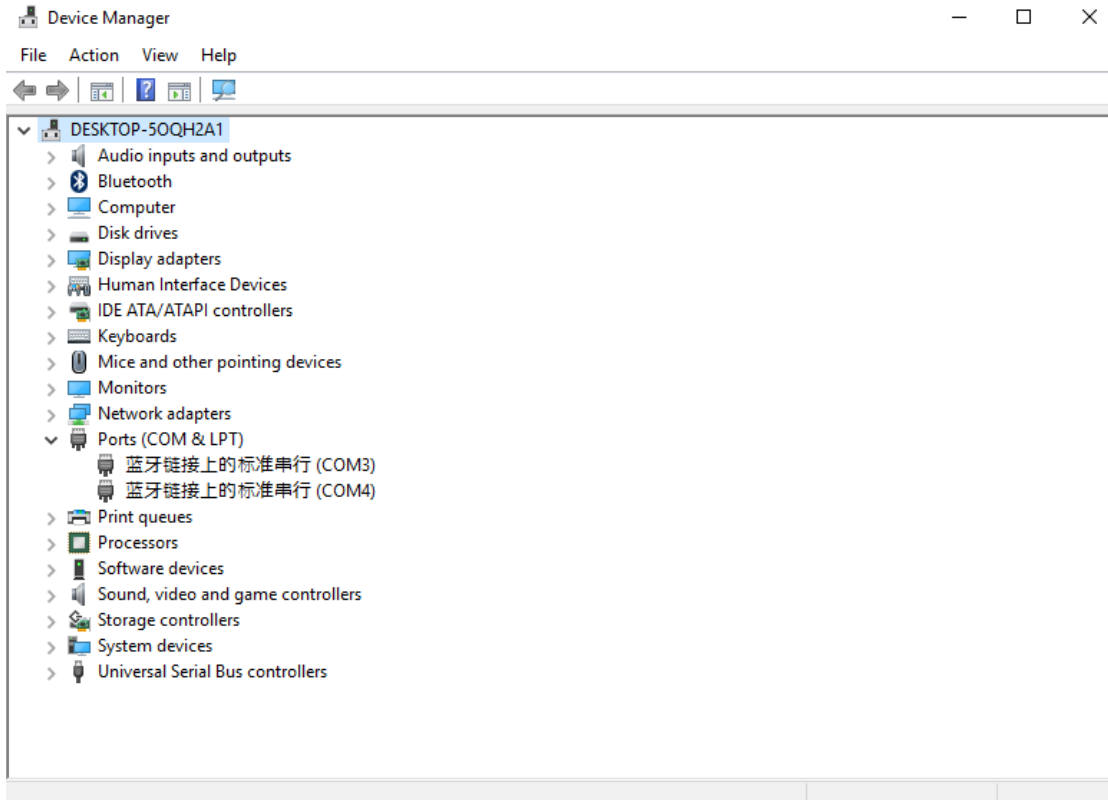
Give us feedback

[Get help](#)

CSR8510 A10

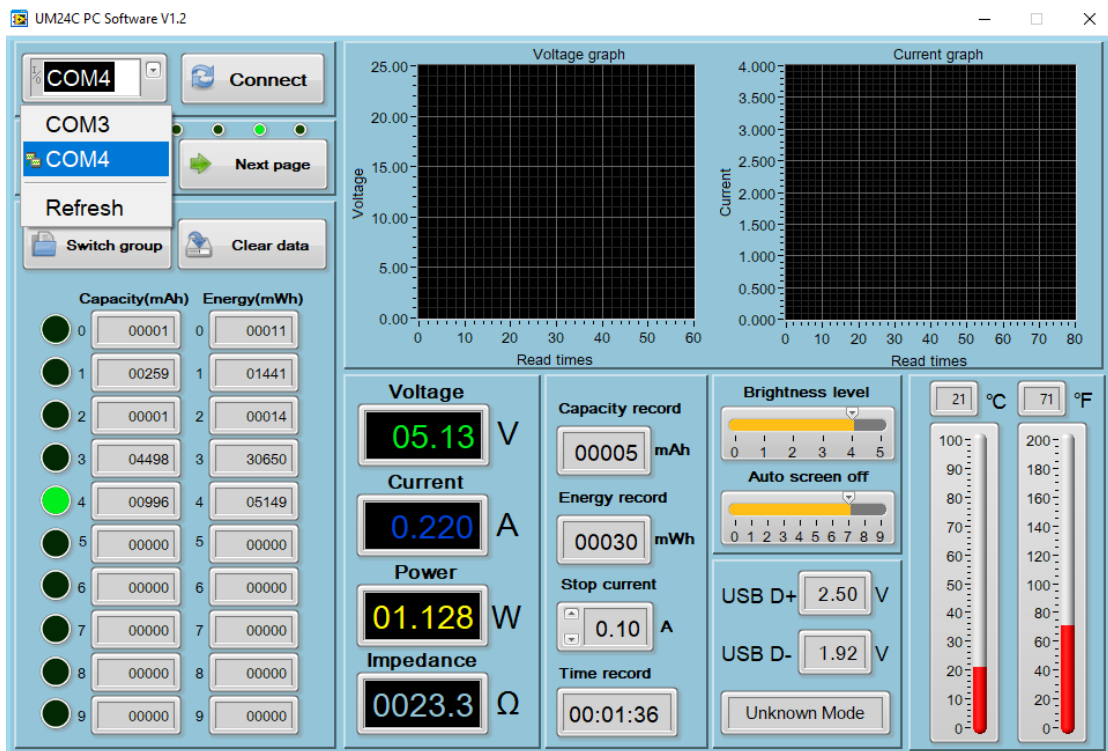


3.1 View device Manager

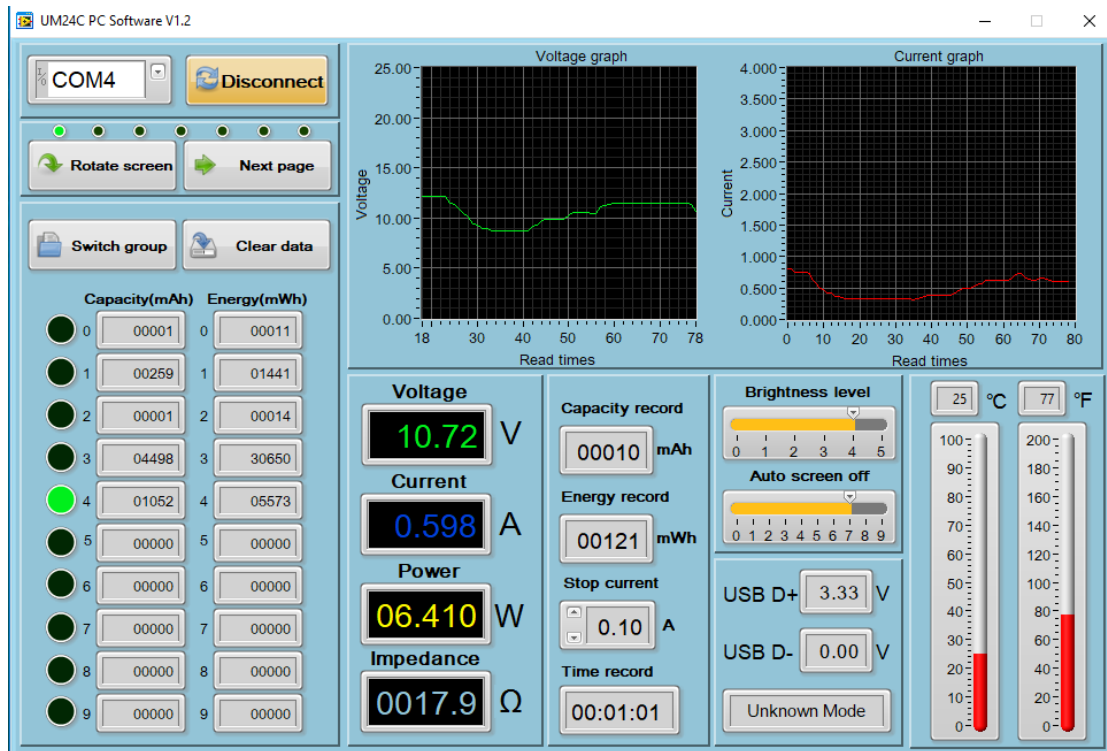


3.2 Connect bluetooth:

3.2.1 Bluetooth connection is successful; there will be two serial ports. Select the lower value port. Example, if the ports configured for Bluetooth are COM3 and COM4, then select COM3 for the connection. Or you right click bluetooth device to see the the attribute, there show the corresponding port number. You can select it.

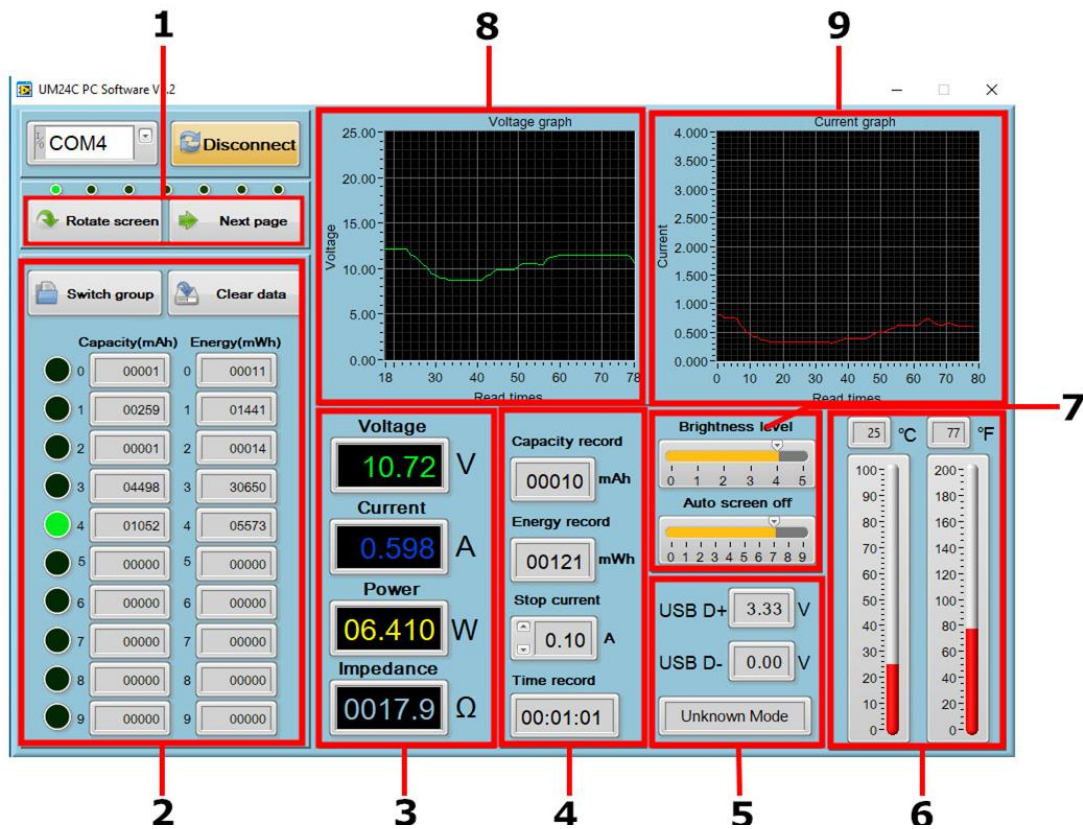


3.2.2 When the Bluetooth indicator changes from blinking to static, click “Connect”



4. Function Introduction

4.1 Program interface overview:

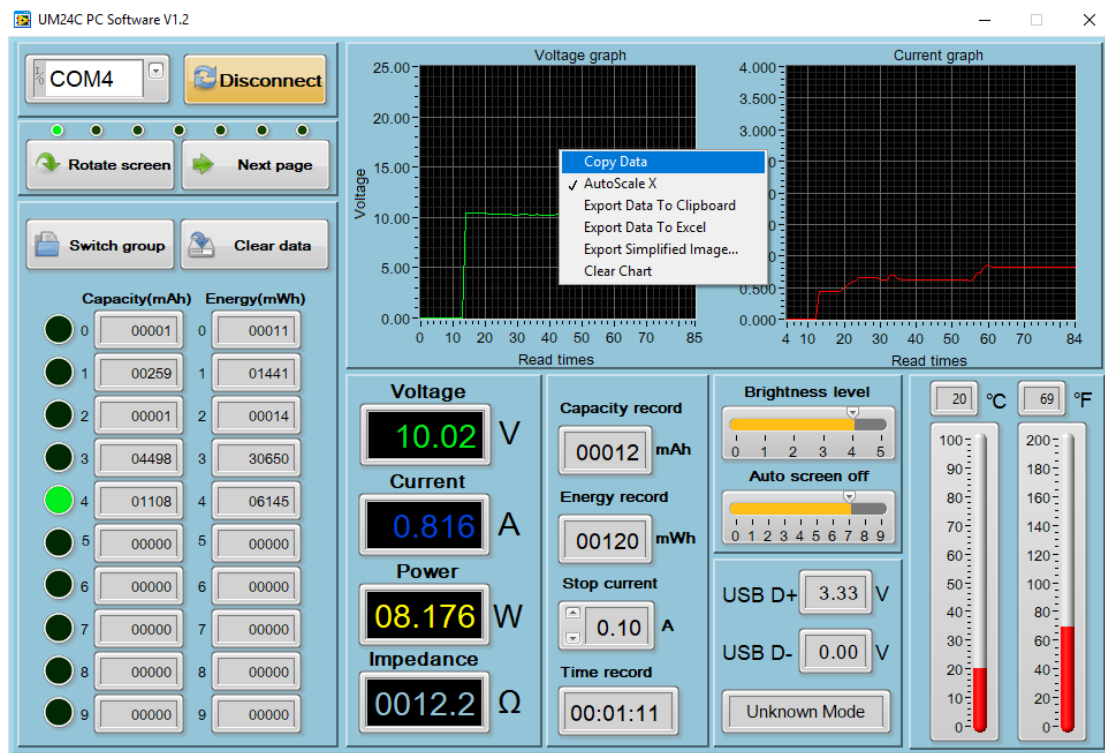


1: Basic functions: Rotate screen, Next pages

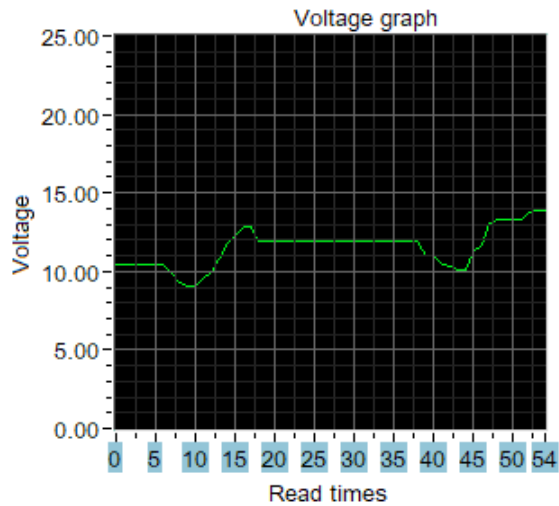
- 2: Corresponding data group: data group switch, data group data clear
- 3: Corresponding the main display interface 1: main measurement interface
- 4: Corresponding the main display interface 3: Data recording interface
- 5: Corresponding the main display interface 2: Quick Charge Recognition interface
- 6: Corresponding the main display interface 7: Settings interface, dual format temperature display
- 7: Corresponding the main display interface 7: Settings interface, screen brightness, auto screen off time.
- 8: Corresponding the main display interface 6: Current Graphing Interface.
- 9: Corresponding the main display interface 5: Voltage Graphing Interface.

4.2 Graphing and Data Export:

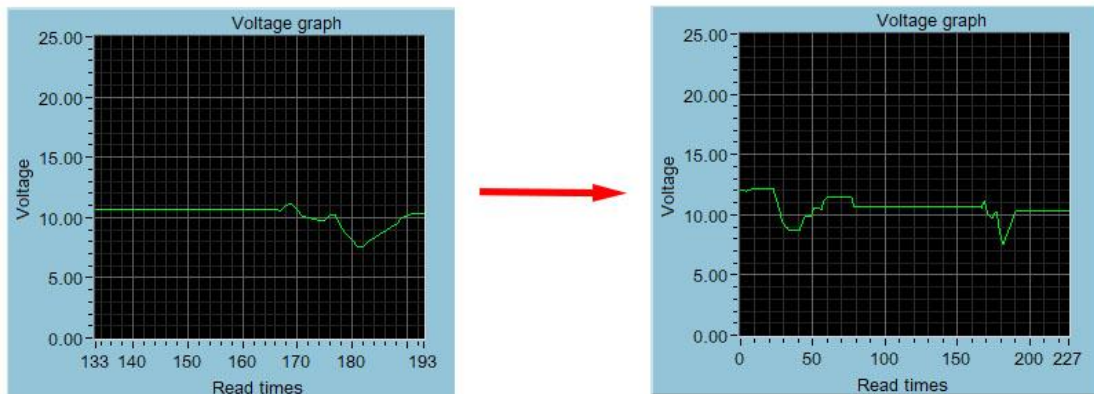
Move mouse over the Voltage / Time measurement graph then right-click and select the following options:



4.2.1: Copy data to the clipboard:



4.2.2: Automatically adjust the X axis:



4.2.3: Export data to the clipboard:

Format : Reference point number on X Axis, Voltage value at that reference point.

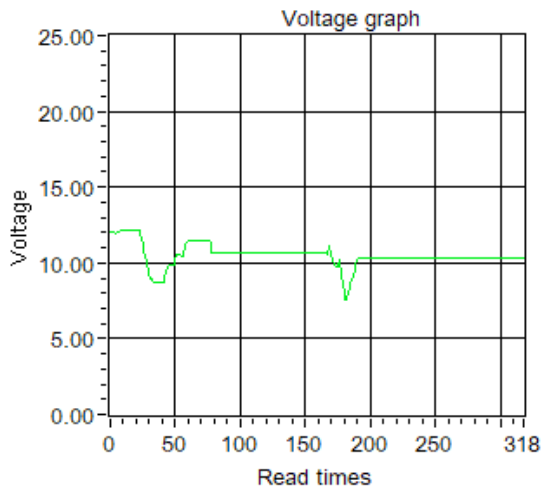
Read times	Voltage graph	Voltage(V)	Voltage graph
0	12.03		
1	12.02		
2	12.03		
3	12.03		
4	11.97		
5	12.00		
6	12.00		
7	12.08		
8	12.10		
9	12.13		
...			

4.2.4: Export data to Excel:

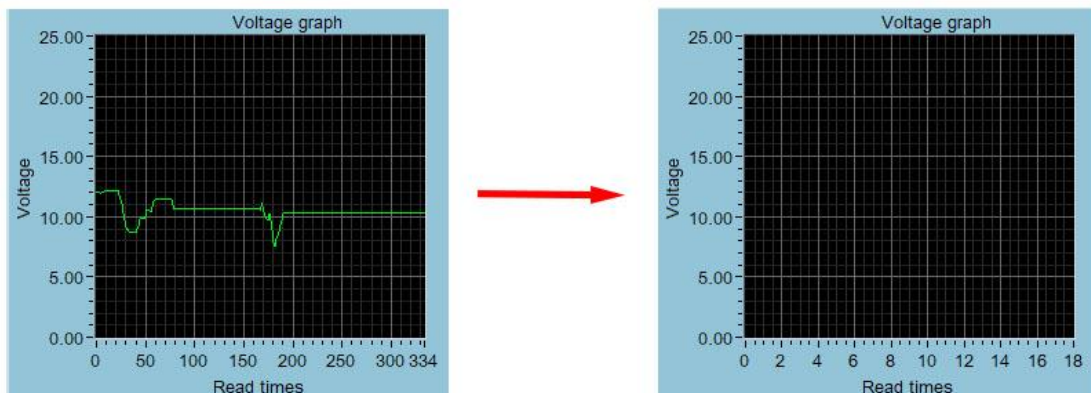
Export data to Excel. If you want export all data, remember to click auto scale X. otherwise only the current record data group is exported. Please note, the exported data is only for Microsoft Office Excel.

	A	B	C	D	E	F	G	H	I
1	Read times - Voltage graph	Voltage(V) - Voltage graph							
2		0	12.03						
3		1	12.02						
4		2	12.03						
5		3	12.03						
6		4	11.97						
7		5	12						
8		6	12						
9		7	12.08						
10		8	12.1						
11		9	12.13						
12		10	12.15						
13		11	12.15						
14		12	12.16						
15		13	12.17						
16		14	12.17						
17		15	12.18						
18		16	12.18						
19		17	12.18						

4.2.5: Export simplified images:



4.2.6: Clear chart:



Note:

1. for desktop, when you use the bluetooth adapter to make bluetooth connection, Please don't use the adapter own driver, and use the windows system bluetooth driver, otherwise the module can't make SSP series port communication. If you have installed the adaptor driver, you can uninstall it and unplug the adaptor, then plug in again, the system will install it automatically.

2. after power off, when power on again, you need to select the COM port again. When the bluetooth indicator is lighting, you can connect the PC with module
- 3, please use windows official version, simple version may lose some part.
- 4, when communicating, don't press the button on tester, otherwise there will be some error data